



**PRAKASH** DRILLING MACHINES

---

# Product Catalog

Ver 2024.06

(This catalog can be best viewed as Full Screen)

**Prakash Engitech Pvt. Ltd.**

Rajkot (Gujarat) **INDIA**

Mo. : 9408700300 / 400 / 500 / 600

 : [sales@prakashmachines.in](mailto:sales@prakashmachines.in)

 : [www.prakashmachines.in](http://www.prakashmachines.in)

Online Presence :



# Radial Drill Machines



**DC411**



**R40AA**



**R40G**



**R40BA**



**R40**



**R25**

# Pillar Drill Machines



**P40NEO**



**P38**

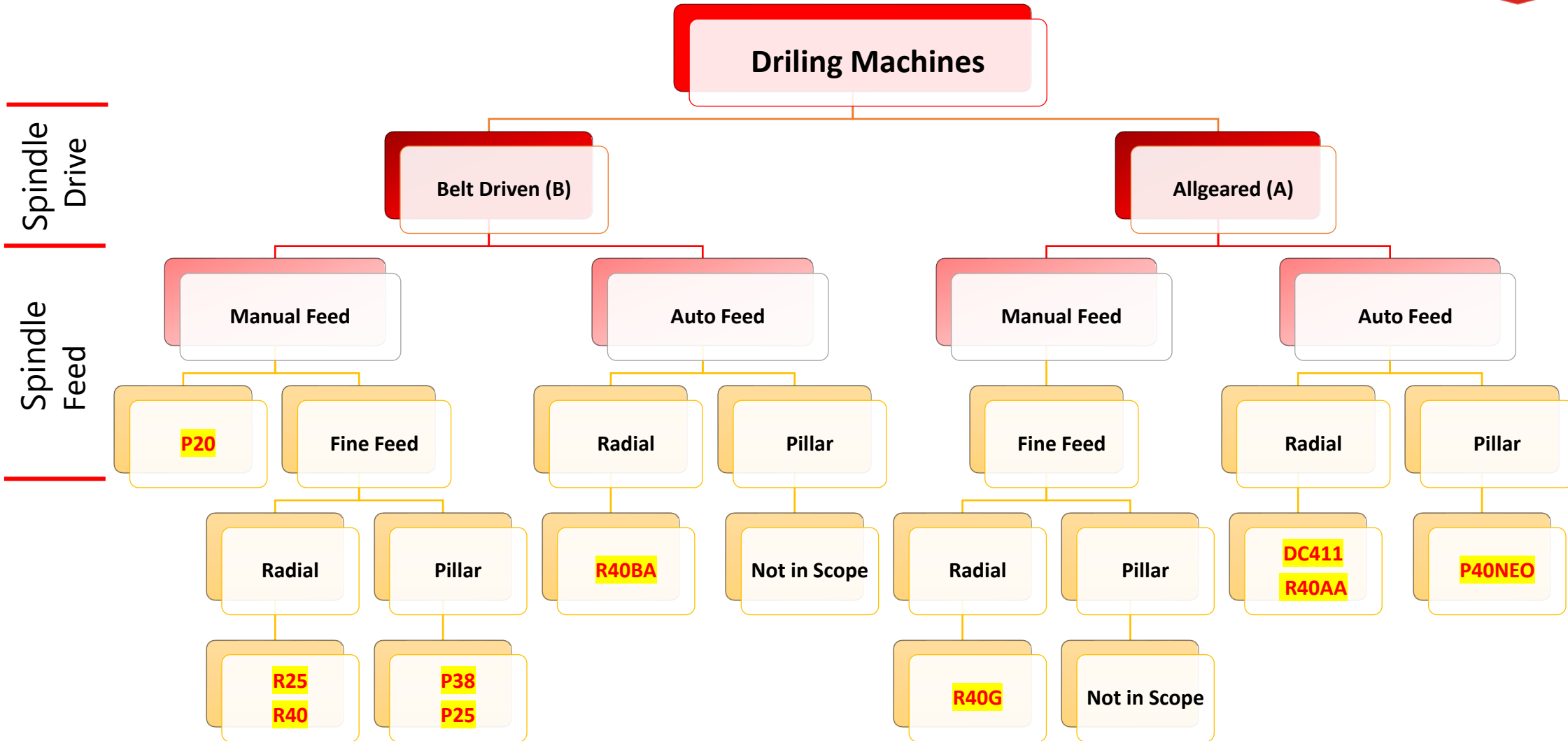


**P25**



**P20**

# Types and model of machine as per drive and feed mechanisms :



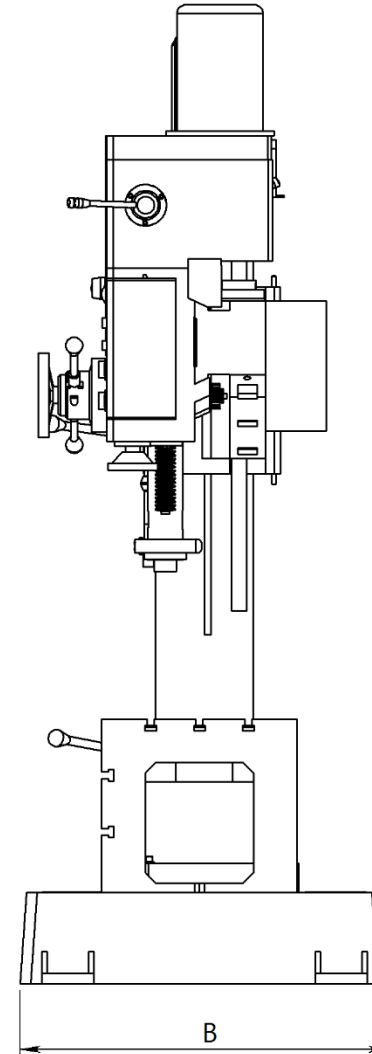
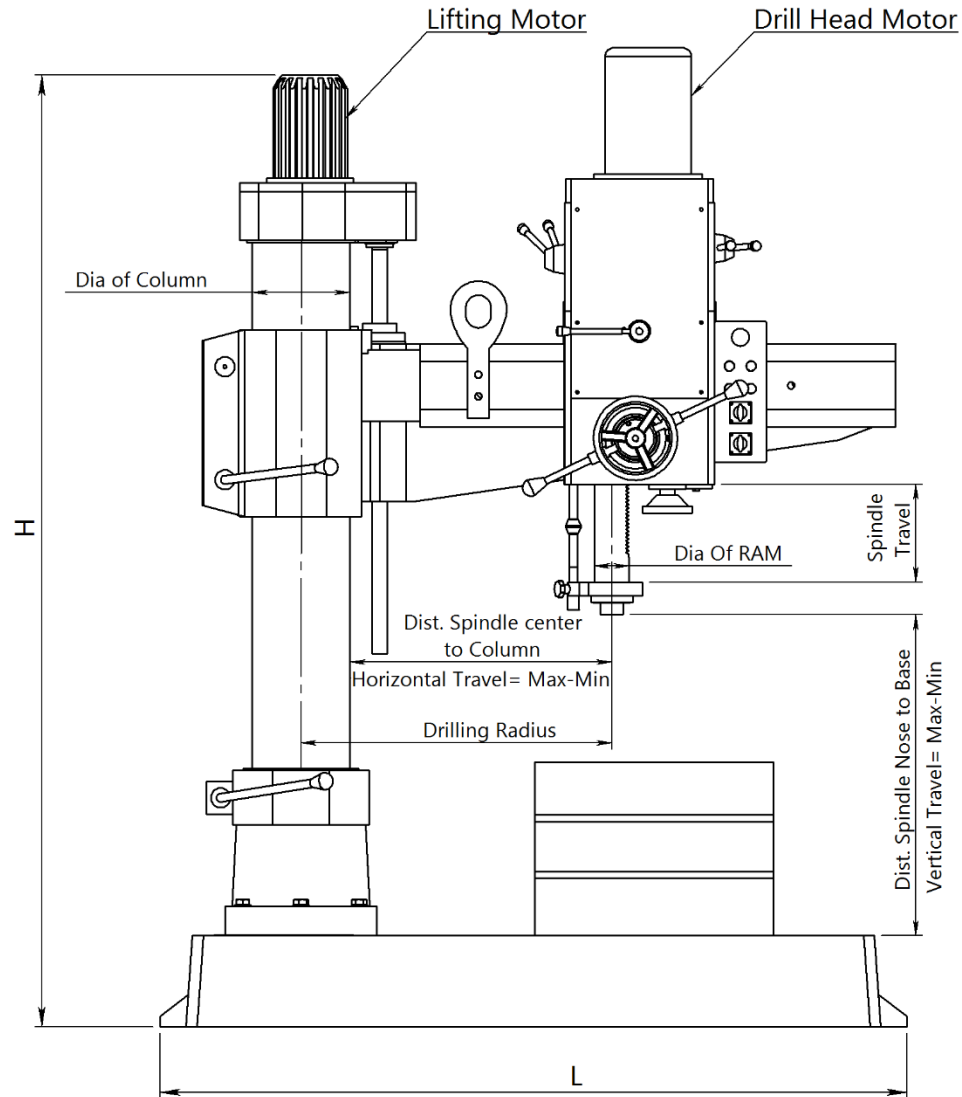
## Machine selection chart as per application :



		Drilling Capacity	Workpiece Size	Production Batch Size	No. of sizes of Diff Holes in a Workpiece	Drilling	Tapping	Reaming	Boring
Radial	DC411	42	Large	Mass	More	●	●	●	●
	R40AA	40	Big	Mass	More	●	●	●	●
	R40G	40	Big	Mass	More	●	●	●	
	R40BA	40	Big	Medium	Moderate	●	●	●	●
	R40	40	Big	Medium	Moderate	●	●	●	
	R25	25	Small	Small	Moderate	●	●	●	
Pillar	P40NEO	40	Big	Mass	More	●	●	●	●
	P38	38	Big	Mass	Moderate	●	●	●	
	P25	25	Small	Mass	Moderate	●	●	●	
	P20	20	Small	Mass	Moderate	●	●	●	

This illustration is tentative only. Final selection may depend on actual applications. Please contact us for any technical information required.

# How to read specifications of Radial and Pillar Drill Machines





**PRAKASH** DRILLING MACHINES

---

# Radial Drill Machines



## Model : **R40**

---

40 mm Cap. Single Column Backgeared  
Finefeed Radial Drill Machine

## Model : **R40BA**

---

40 mm Cap. Single Column Backgeared  
Autofeed Radial Drill Machine

**Model : R40BA**

40 mm Cap. Backgeared Autofeed  
Radial Drill Machine



**Model : R40**

40 mm Cap. Radial Drill Machine  
With Fine Feed



	Description	R40BA	R40
CAPACITY	Drilling in M.S.	40	
	Drilling in C.I.	45	
	Tapping in M.S.	20	
DRILL HEAD	Rough Boring in M.S.	60	-----
	Spindle Travel	250	
	Spindle Hole Taper	MT -4	
	Spindle Speeds (RPM x steps)	88 – 2600 x 8	
	Diameter of RAM	78	
	Spindle Feed Type / Feed (mm/rev)	AutoFeed / 0.05 & 0.09	Fine Feed
	Max/Min Dist. Spindle nose to base	850/250	
	Max/Min Dist. Spindle center to column	905/385	
WORKING RANGE	Max. Drilling Radius	990	
	Machine Measurement (LxBxH)	1350x850x1825	
	Diameter of Column	170	
	Work Table	300x300x385 / All for sides useful	
	Working Range (On Base)	900 x 800	
	In Built Coolant Tank	Yes	
POWER	Drill head Motor	1.5 HP/1440 RPM	
	Lifting Motor	0.5 HP / 1440 RPM	
	Lifting Motor V- belt	A-23 / A -24	
	Head Motor V-belt	B-46 / B-47	

Model : **R40BA**

Model : **R40**



### Key Features

- 905 mm Center Distance
- 2.5 Module Autofeed Gears in R40BA
- [Taper Cone Mechanism of Autofeed](#)
- Taper Wedge
- 170 mm Column Diameter
- Longer Gun Metal Nut for Lifting of Arm
- [All other R40 Series Features](#)

### Standard Accessories

- Motor Pulley
- Electrical Panel Board in **R40BA**

### Extra Accessories

- Electrical Motors
- Coolant Pump with coolant tank
- Drill Chuck & Arbour
- Tapping Control Panel Board
- Keyless Drill Chuck & Arbour
- Extra Long column
- Tapping Attachment (Mechanical)
- "V" Belts
- Box Table





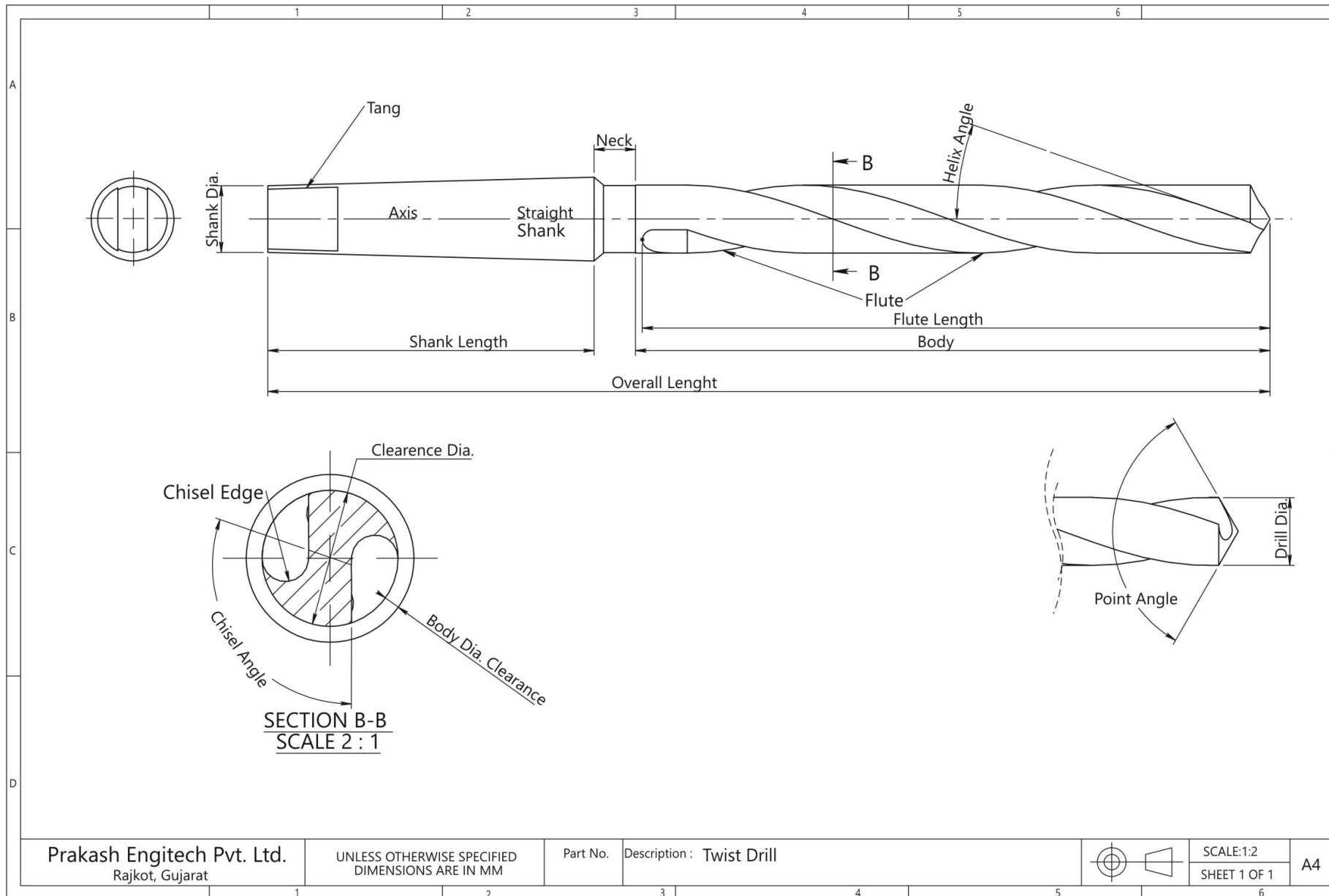
## **PRAKASH** DRILLING MACHINES

---

# **General Drilling Data**



# Twist Drill Nomenclature





Nominal Dia		B.S.W.		B.S.P. & B.S.P.T.		
Fractional	Major Min Dia Inch	TPI	Drill Size	Major Min Dia	TPI	Drill Size
1/16"	0.0635	60	no.55	-	-	-
3/32"	0.095	48	no.48	-	-	-
1/8"	0.1262	40	2.55m	0.383	28	8.75m
5/32"	0.1576	32	3.10m	-	-	-
3/16"	0.1891	24	3.7m	-	-	-
7/32"	0.2204	24	11/64"	-	-	-
1/4"	0.2518	20	5.1m	0.518	19	11.8m
9/32"	0.283	20	no.1	-	-	-
5/16"	0.3143	18	6.5m	-	-	-
3/8"	0.377	16	5/16"	0.656	19	15.25m
7/16"	0.4397	14	9.25m	-	-	-
1/2"	0.5024	12	10.5m	0.825	14	3/4"
9/16"	0.5649	12	12.1m	-	-	-
5/8"	0.6274	11	13.5m	0.902	14	53/64"
11/16"	0.6899	11	19/32"	-	-	-
3/4"	0.7526	10	41/64"	1.041	14	24.5m
13/16"	0.8151	10	18.25m	-	-	-
7/8"	0.8776	9	19.25m	1.189	14	28.25m
15/16"	0.9401	9	21m	-	-	-
1"	1.0028	8	22m	1.309	11	30.75m
1.1/8"	1.128	7	24.75m	-	-	-
1.1/4"	1.253	7	1.3/32"	1.65	11	39.5m
1.3/8"	1.3782	6	1.3/16"	-	-	-
1.1/2"	1.5032	6	33.5m	1.882	11	1.25/32"
1.5/8"	1.6286	5	1.27/64"	-	-	-
1.3/4"	1.7536	5	39m	2.116	11	51.5m
1.7/8"	1.8788	4.5	1.21/32"	-	-	-
2"	1.0038	4.5	44.5m	2.343	11	2.1/4"

## Drilling Size For Tapping

British Standard Whitworth  
Form Threads 55° Inc.  
Angle





## Drilling Size For Tapping

### Metric Form Threads

Nominal Dia. M.M.	SYSTEM INTERNATIONAL		
	Major Min. Dia.	Pitch	Drill Size
6	0.2378	1	5m
7	0.2772	1	6m
8	0.3168	1.25	17/64"
9	0.3561	1.25	7.7m
10	0.3957	1.5	8.4m
11	0.4351	1.5	9.5m
12	0.4746	1.75	10.25m
13	-	1.75	11.25m
14	0.5534	2	12m
16	0.6321	2	35/64"
18	0.7113	2.5	39/64"
20	0.79	2.5	11/16"
22	0.8687	2.5	49/64"
24	0.9477	3	21m
27	1.0658	3	24m
30	1.1841	3.5	26.5m
33	1.3022	3.5	29.5m
36	1.4205	4	32m
39	1.5386	4	35m
42	1.6566	4.5	37.5m
45	1.775	4.5	40.5m
48	1.8935	5	43m
52	2.0508	5	47m
56	2.2085	5.5	50.5m
60	2.366	5.5	54.5m