



**PRAKASH** DRILLING MACHINES

---

# Product Catalog

Ver 2022.01

(This catalog can be best viewed as Full Screen)

**Prakash Engitech Pvt. Ltd.**

Rajkot (Gujarat)

Mo. : 9408700300 / 400 / 500 / 600


 : [sales@prakashmachines.in](mailto:sales@prakashmachines.in)

 : [www.prakashmachines.in](http://www.prakashmachines.in)

Online Presence :     



### How to Use:

- All blue coloured underlined text is hyperlink to respective topics.
- Click Home  button from any pages to get back to Catalog Map (Index) page.

### Notes:

- Due to constant improvements in our machines, all Specifications are subject to change without prior notice.
- All Dimensions are in mm.
- Accessories shown in the photograph may not be a part of the standard accessories.

### Vote of Thanks

We welcome suggestions of our valued clients and readers of this catalog for improvements like addition, correction or subtraction of any part thereof to make this catalogue more useful, knowledgeable and interactive.

© Prakash Engitech Pvt. Ltd., 2014

The contents of this publication are the copyright of the publisher and may not be reproduced in any form, in whole or in part without permission from the publisher.



## Model : **P40NEO**

40/50 mm Cap. Allgeared Autofeed  
Pillar Drill Machine



### **Oil bath Gear Box**

The all new design of gear box in model PMW-R40AA,R40G and P40AA is having 9 speed with all 9 gear made up of hardened NiCr steel up to HRC 50-55. Oil bath gear box and hardened gears give very long life to the machine. Rotation and easy sliding of gears in bearings gives very high reliability. Gear are internally six splined and shaft are externally splined

All the gears in gearbox are machined on imported WMW Germany make gear shaper.

All the splines in the gear box are machined on imported PFAUTER Germany make spline milling machine.

### **Autofeed Gear Box**

Autofeed gear box used in Machine R40AA, R40BA & P40AA is having gears made up of NiCr Steel with heavy 2.5 module. All gears are also hardened. Two worm gears are made up of heavy duty 2.82 module teeth. All the shafts in the Gear Box are supported through good quality bearings and not the Bushes. Engaging Of Autofeed through **TAPER CONE MECHANISM** as in the lathe machines enables maximum loading capacity leaving behind other machines.



## Model : **P40AA - NEO**

40 mm Cap. Allgeared Autofeed  
Pillar Drill Machine

### Key Features

- 9 Spindle speeds with single speed motor
- Hardened Gears
- Hardened & Ground Spindle, RAM, Pinion
- 160 mm Column Diameter
- Single Piece column and table Bracket
- In Built Coolant Tank
- Use U-Drill, Single Insert Drill and HSS Drill

### Standard Accessories

- Electrical Panel Board & Switches
- Electrical Motors

### Extra Accessories

- Coolant Pump
- Drill Chuck & Arbor
- Tapping Control Panel Board
- Keyless Drill Chuck & Arbor
- Through Coolant U Drill Holder

	Description	P40AA Neo
CAPACITY	Drilling in M.S.	HSS Drill – 40/50 U Drill - 33
	Drilling in C.I.	45
	Tapping in M.S.	25
DRILL HEAD	Rough Boring in M.S.	75
	Spindle Travel	250
	Spindle Hole Taper	MT - 4
	Spindle Speeds (RPM x steps)	70-1225 x 9
	Diameter of RAM	78
	Autofeed Ranges (mm/rev.)	0.05 & 0.09
	Max/ Dist. Spindle Nose to Table	575
WORKING RANGE	Spindle Center to Column	330
	Machine Measurement (LxBxH)	880 x 850 x 2300
	Built in Coolant Tank	Yes (20 Ltr)
	Diameter of Column	160
	Dist. from Spindle Nose to Base	920
	Work Table	450 x 455
	Drill Head Motor	1.5 HP/960 RPM Optional: 3 HP/960 RPM

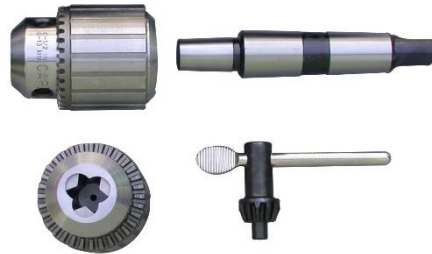




# **PRAKASH** DRILLING MACHINES

---

## **Accessories**



Part No	Description
KD	13 mm Keyless Drill Chuck with Arbour

Part No	Description
493	Drill Chuck – 1/2"
494	Arbour MT3-JT6 for 1/2" Chuck
495	Arbour MT2-JT6 for 1/2" Chuck
496	Drill Chuck – 3/4"
497	Arbour MT4-JT6 for 1/2" Chuck

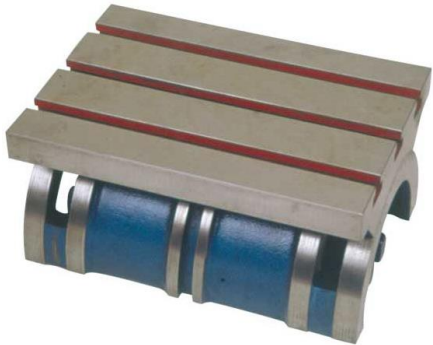


Part No	Description
498	Drill Sleeve MT3-MT2
499	Drill Sleeve MT4-MT3

Part No	Description	Qty
QCS 33	Quick Change Drill Chuck – MT-3	1
	MT – 2 Adaptor	2
	MT – 3 Adaptor	2
QCS 34	Quick Change Drill Chuck – MT-4	1
	MT – 2 Adaptor	2
	MT – 3 Adaptor	2



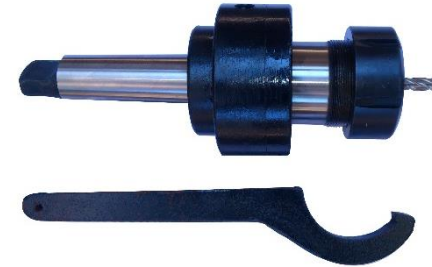
Part No	Description
9081	Coolant Pump, Coolant Tank Spout Assembly and Pipe



Part No	Description
TT1015	Tilting Table Size 10" x 15" (250 x 375 mm) Graduation 90°, Inclinal 45° on each side



Part No	Description
500	Heavy Duty Drill Vice - 150 mm (Non Swivelling Type)

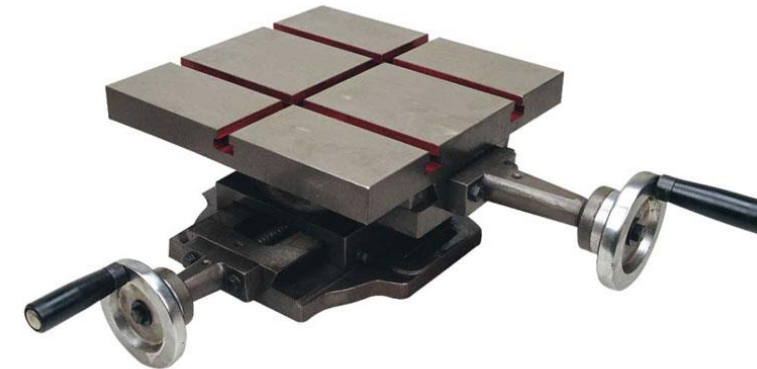


Part No	Description
512	Milling Collet Adapter E40-MT3 with Spanner, collet Nut and Collar
513	Milling Collet Adapter E40-MT4 with Spanner, collet Nut and Collar



## Reversible Tapping Attachment

Part No	Description
TAR-22	MT-2 and Tap Size M3~M12
TAR-23	MT-3 and Tap Size M3~M12
TAR-33	MT-3 and Tap Size M8~M20
TAR-34	MT-4 and Tap Size M8~M20
TAR-44	MT-4 and Tap Size M14~M30



Part No	Description
XY1212	XY Cross Slide 300 x 300 mm Table Size 200 x 200 mm Table Travel

## Non-Reversible Tapping Attachment

Part No	Description
TANR-12	MT-2 and Tap Size M3~M12
TANR-13	MT-3 and Tap Size M3~M12
TANR-23	MT-3 and Tap Size M8~M20
TANR-24	MT-4 and Tap Size M8~M20
TANR-34	MT-4 and Tap Size M14~M30



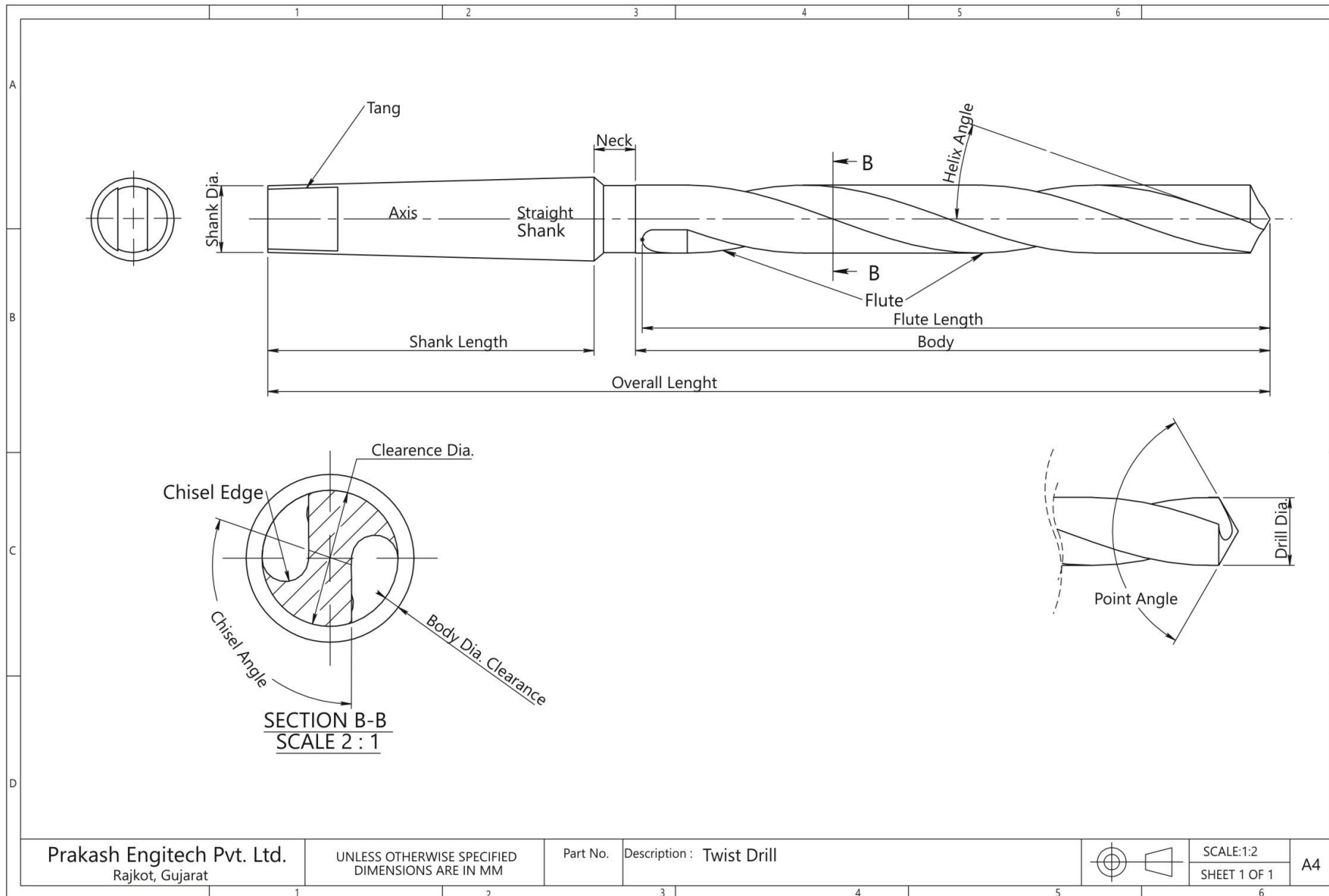
**PRAKASH** DRILLING MACHINES

---

# General Drilling Data



# Twist Drill Nomenclature





Nominal Dia		B.S.W.		B.S.P. & B.S.P.T.		
Fractional	Major Min Dia Inch	TPI	Drill Size	Major Min Dia	TPI	Drill Size
1/16"	0.0635	60	no.55	-	-	-
3/32"	0.095	48	no.48	-	-	-
1/8"	0.1262	40	2.55m	0.383	28	8.75m
5/32"	0.1576	32	3.10m	-	-	-
3/16"	0.1891	24	3.7m	-	-	-
7/32"	0.2204	24	11/64"	-	-	-
1/4"	0.2518	20	5.1m	0.518	19	11.8m
9/32"	0.283	20	no.1	-	-	-
5/16"	0.3143	18	6.5m	-	-	-
3/8"	0.377	16	5/16"	0.656	19	15.25m
7/16"	0.4397	14	9.25m	-	-	-
1/2"	0.5024	12	10.5m	0.825	14	3/4"
9/16"	0.5649	12	12.1m	-	-	-
5/8"	0.6274	11	13.5m	0.902	14	53/64"
11/16"	0.6899	11	19/32"	-	-	-
3/4"	0.7526	10	41/64"	1.041	14	24.5m
13/16"	0.8151	10	18.25m	-	-	-
7/8"	0.8776	9	19.25m	1.189	14	28.25m
15/16"	0.9401	9	21m	-	-	-
1"	1.0028	8	22m	1.309	11	30.75m
1.1/8"	1.128	7	24.75m	-	-	-
1.1/4"	1.253	7	1.3/32"	1.65	11	39.5m
1.3/8"	1.3782	6	1.3/16"	-	-	-
1.1/2"	1.5032	6	33.5m	1.882	11	1.25/32"
1.5/8"	1.6286	5	1.27/64"	-	-	-
1.3/4"	1.7536	5	39m	2.116	11	51.5m
1.7/8"	1.8788	4.5	1.21/32"	-	-	-
2"	1.0038	4.5	44.5m	2.343	11	2.1/4"

## Drilling Size For Tapping

British Standard Whitworth  
Form Threads 55° Inc.  
Angle





## Drilling Size For Tapping

### Metric Form Threads

Nominal Dia. M.M.	SYSTEM INTERNATIONAL		
	Major Min. Dia.	Pitch	Drill Size
6	0.2378	1	5m
7	0.2772	1	6m
8	0.3168	1.25	17/64"
9	0.3561	1.25	7.7m
10	0.3957	1.5	8.4m
11	0.4351	1.5	9.5m
12	0.4746	1.75	10.25m
13	-	1.75	11.25m
14	0.5534	2	12m
16	0.6321	2	35/64"
18	0.7113	2.5	39/64"
20	0.79	2.5	11/16"
22	0.8687	2.5	49/64"
24	0.9477	3	21m
27	1.0658	3	24m
30	1.1841	3.5	26.5m
33	1.3022	3.5	29.5m
36	1.4205	4	32m
39	1.5386	4	35m
42	1.6566	4.5	37.5m
45	1.775	4.5	40.5m
48	1.8935	5	43m
52	2.0508	5	47m
56	2.2085	5.5	50.5m
60	2.366	5.5	54.5m